

Broken Arrow Electric Supply E-House Power Distribution Centers



Compressed Project Timelines

Known Delivery

Reduced Installation Costs

Minimized On-Site Work

Optimized Footprint

BAES Project Management

We have significant experience in LV and MV switchgear and variable speed drives. We can also help design in arc flash reduction and avoidance, along with power metering and monitoring, and can help optimize your design.

BAES project management will oversee your project.

We offer a full package of services to help your project proceed smoothly and efficiently. This can include pre-project site inspections to suggest options to enhance the project, installation services and start-up services to get the project on line as quickly as possible. We also have experience to help with surge protection, power factor correction, PLC automation & controls, hazardous location products, wire and cable solutions, heat trace products, and lighting systems.

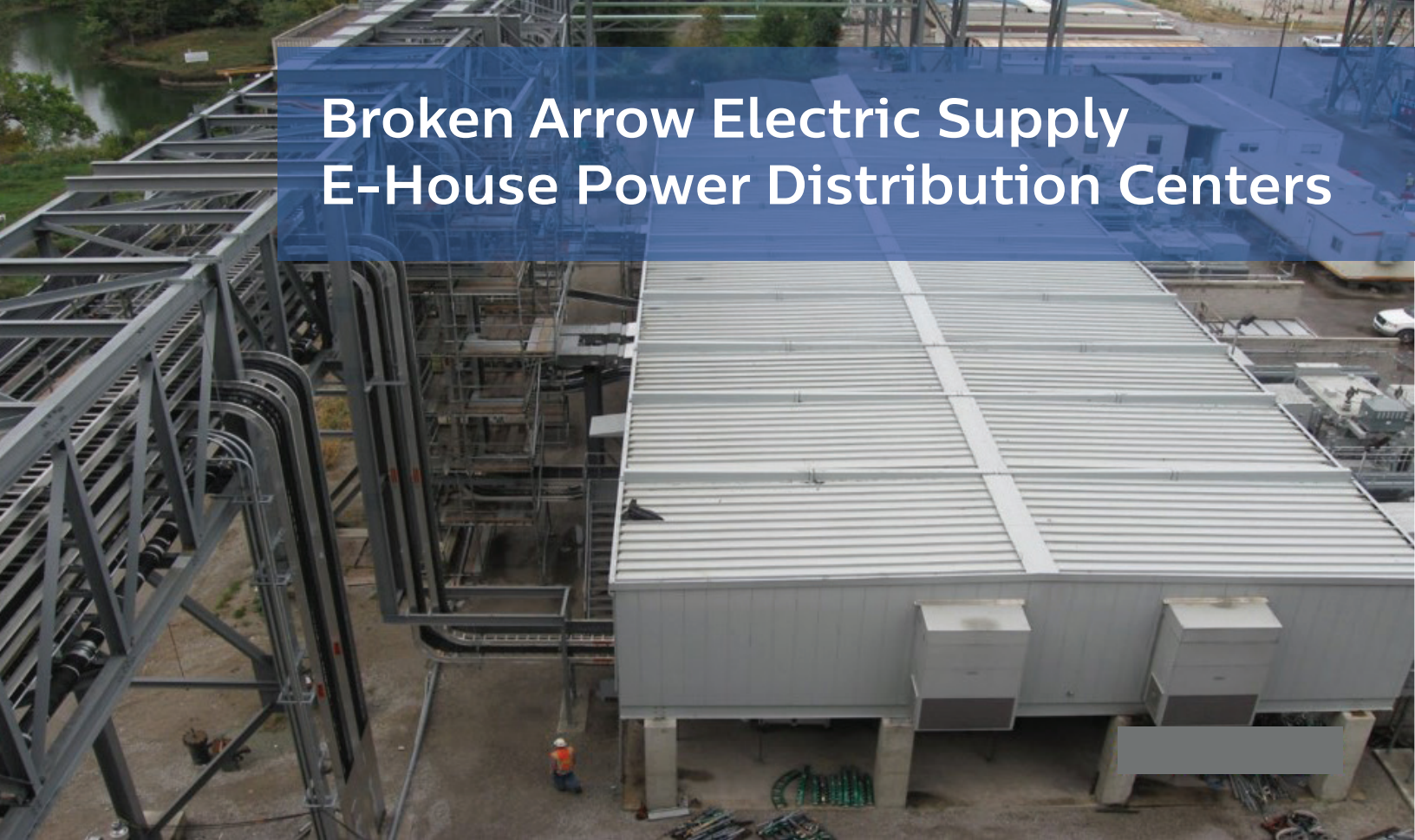
Whether you are building a gas plant or expanding a terminal, **Broken Arrow Electric Supply** has the knowledge and experience to help you succeed.

Broken Arrow Electric Supply is a full service electrical distributor of products, equipment, services, and solutions for the electrical industry.

www.baes.com



Broken Arrow Electric Supply E-House Power Distribution Centers



Broken Arrow Electric Supply
2350 W. Vancouver St.
Broken Arrow, OK 74012
918-258-3581



www.baes.com